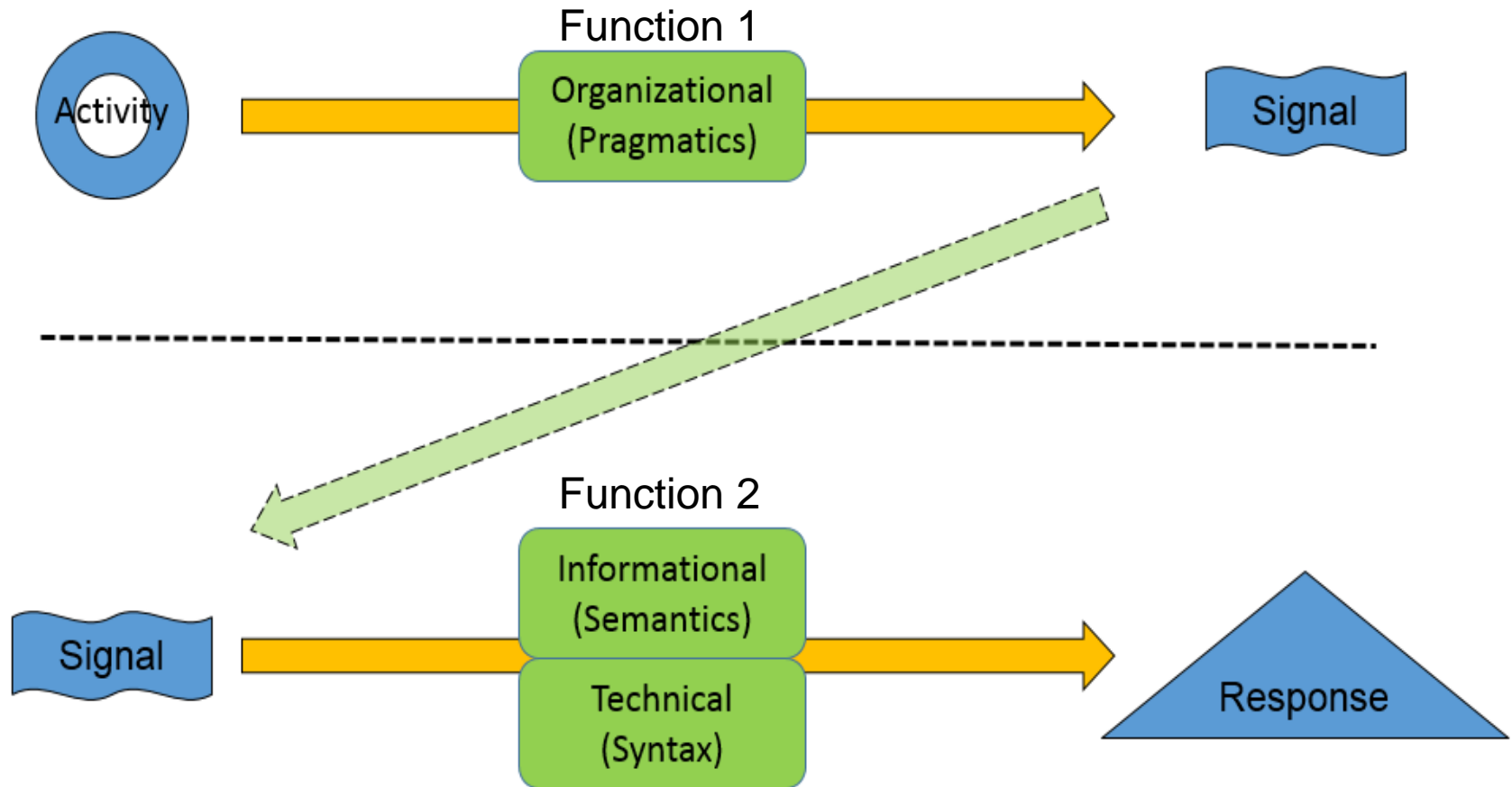
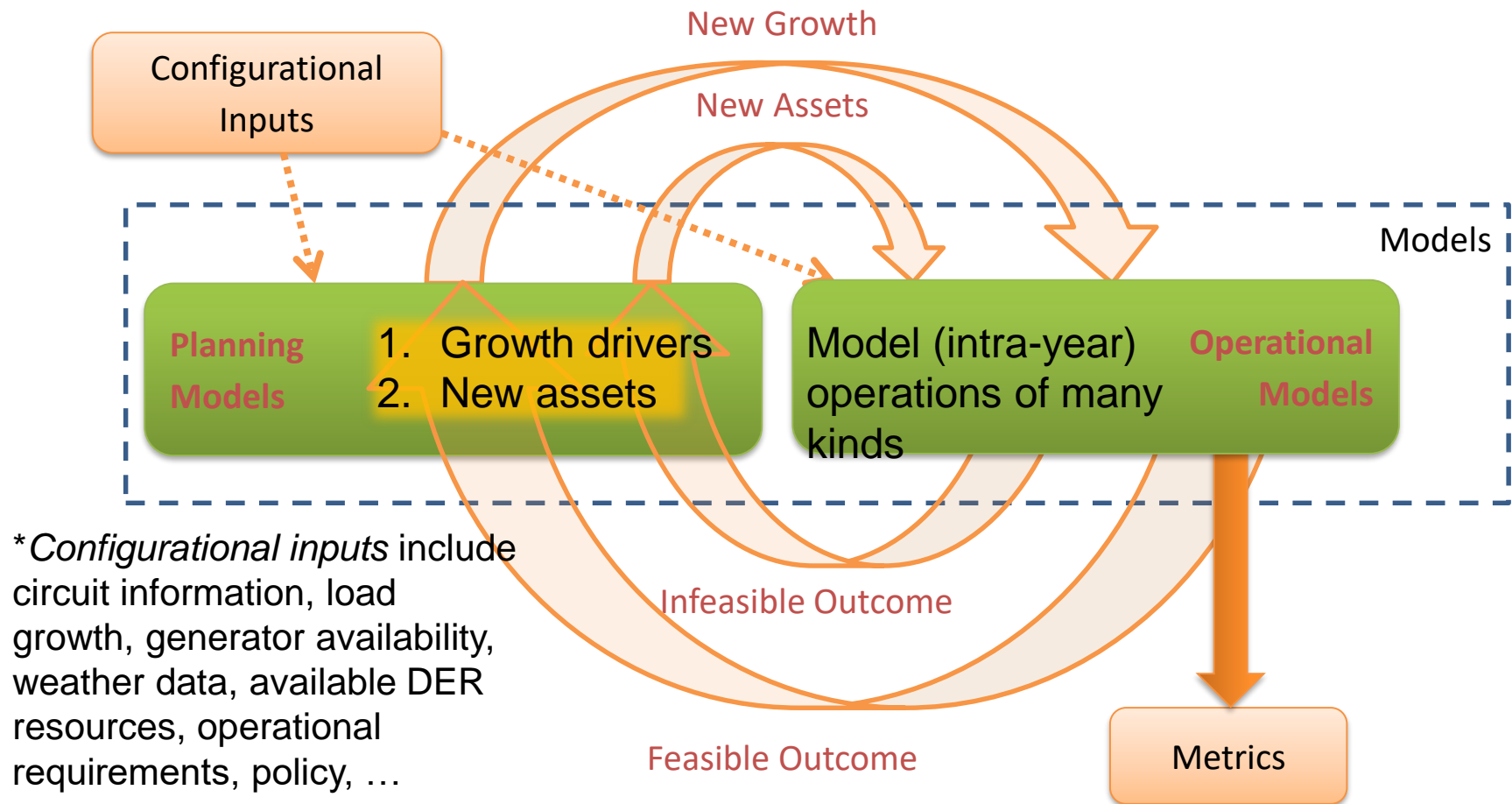


Dissecting Transactive Mechanisms



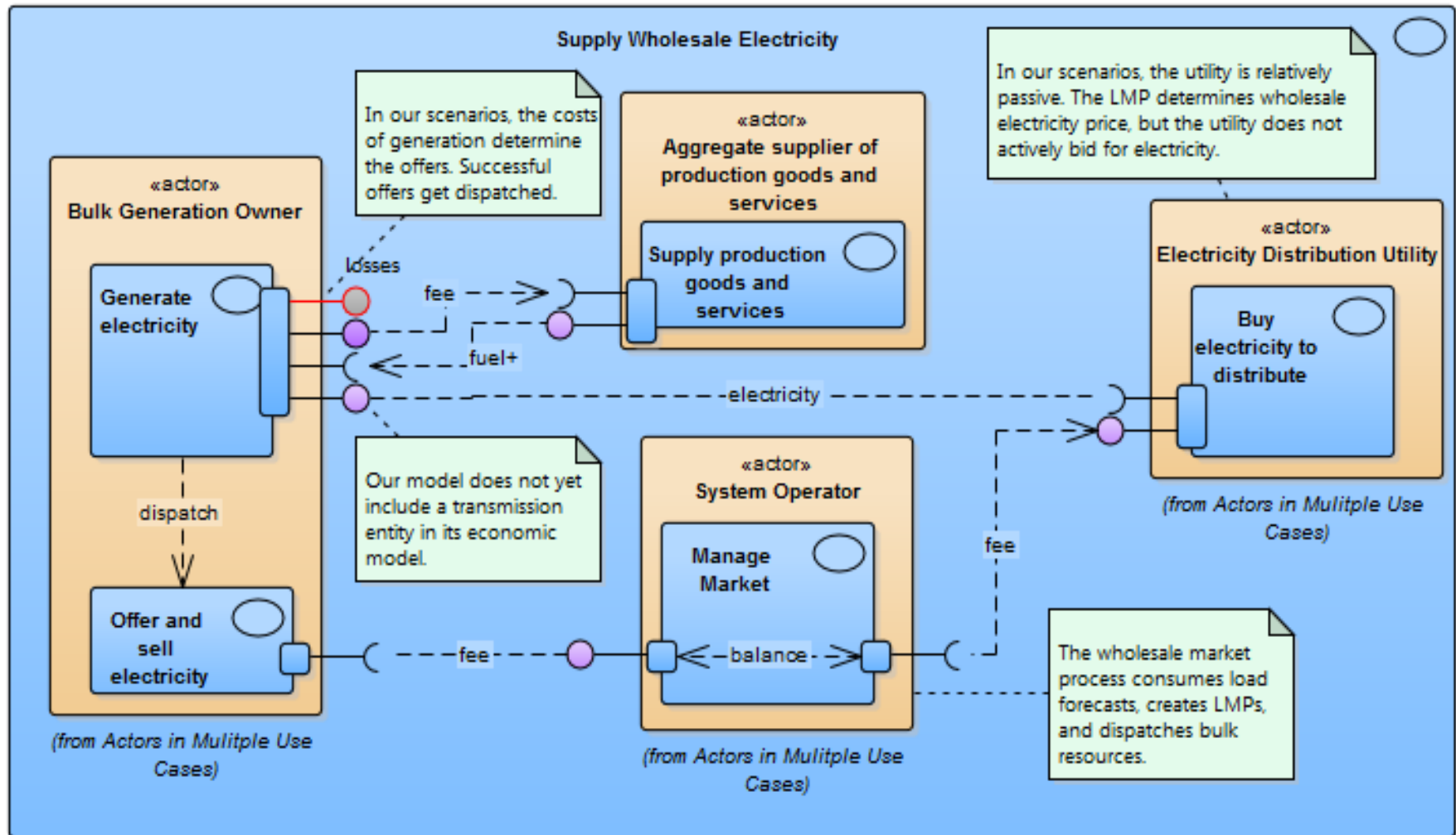
* The green boxes are interoperability levels from the GridWise Architecture Council "GWAC Stack".

Toward a Valuation Methodology

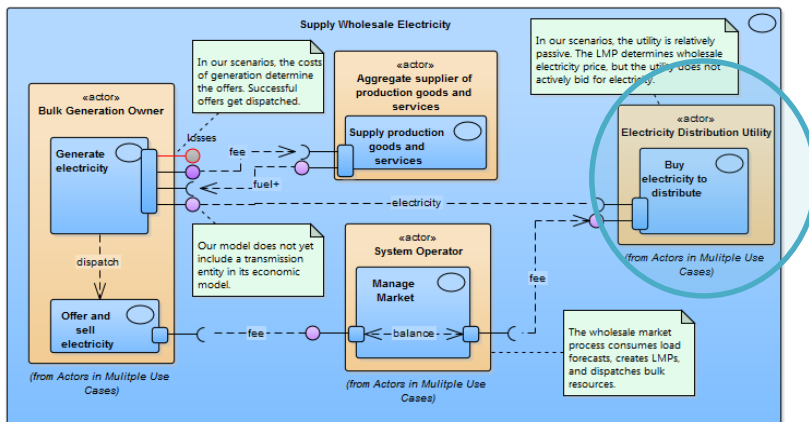
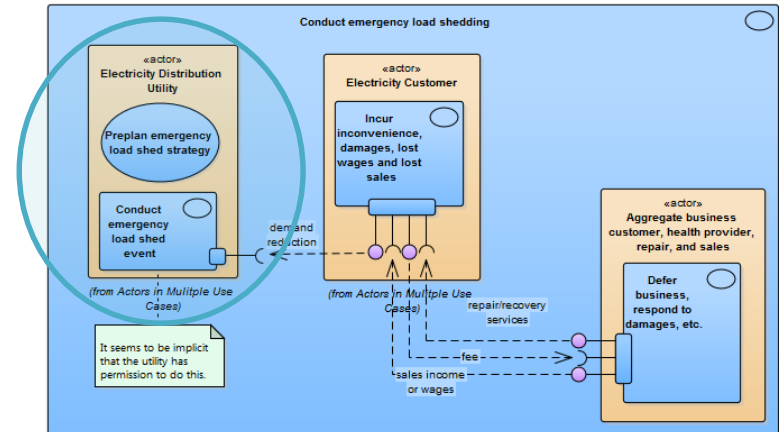
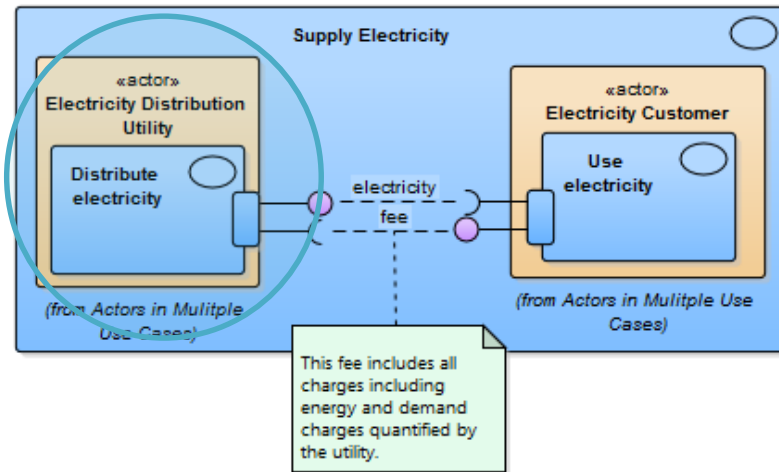


In Hammerstrom DJ. 2016. Report PNNL-SA-120590.

Diagramming Business-Value



Important Concept



IMPORTANT CONCEPT: The sums of *value objects* entering and leaving an *actor* in *business-value diagrams* represent that *actor's business case!*